

Innovation by Biomaterial

LAB n PEOPLE

Natural Magnesium from Nature,
Magnesium Patch deliver Bioactive Essential Minerals deep into the skin.

Product Introduction

- The efficacy of magnesium patch
- Trouble Line
- Wrinkle & Brightening Line
- Melasma Line
- Pore Line

Magnesium Miracle for Skin Problems

Advantages

- Improving all pimples from whitehead to cystic pimples
- Removing fine lines, wrinkles, and dark spots
- Microneedling Results: Increasing the effectiveness of active ingredients in cosmetics and overcoming the protective barrier.
- Essential element-based material : 99% pure magnesium, biodegradable, drug-free, non-drying
- Clinically proven to significantly reduce blemishes, wrinkles and pores.

**Magnesium is an essential element to your health and well-being.
Did you know information on the link between magnesium and skin problems?**

Magnesium Patch

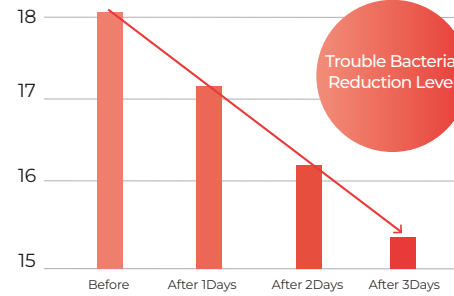


0.1mm Hair



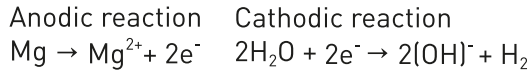
Micro Needles thinner than 0.1mm

GLOBAL ACNE GRADING SYSTEM (GAGS)



Clinical testing conducted by Global Cosmeceutical Center on 20 volunteers.
 Tested on facial area by applying the product.
 2018. Aug. 03 - 2018. Aug. 13. - Effect varies by individual.

Snow²⁺



Biocompatible and bioabsorbable
 Cho et al., 2013

Wrinkle care by microneedling treatment
 Kim et al., 2011

24.3050 Atomic mass
Mg
 Magnesium
 737.7 First ionization energy
 12 Atomic number
 1.31 Electronegativity

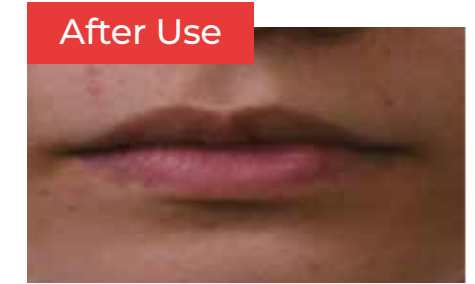
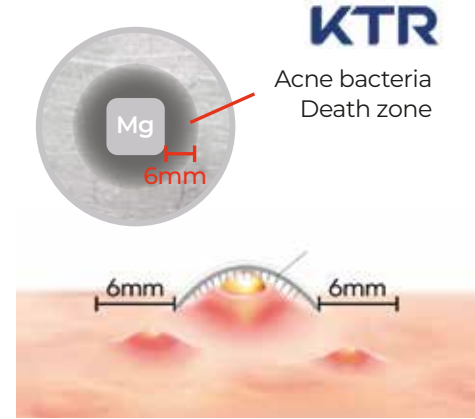
Supporting a strong skin barrier
 M Denda et al., 1999

Efficacy of hydrden on anti-aging
 One et al., 2012

Multiple Patents and Certifications



- Magnesium itself kills P.acne bacteria within a 6mm range from the patch without any serum or active ingredients based on KTR test report.



Clinical testing conducted by Samsung Medical Center on 18 volunteers.
 Tested on facial area by applying the product.
 2022. Sep. 19. - Effect varies by individual.



Product Comparison

Product	 Clear Needle Patch	 Magnesium Patch	 Handy Tok Point Patch
Category	Polymer	Solid Magnesium	Hydrocolloid Band
Ingredients	Hyaluronic acid	99% Pure Magnesium(Metal)	Gelatin, Pectin, and Carboxymethyl-cellulose
Purpose	Treatment	Treatment	Protection
Efficacy	Ineffective	Very Effective	Effective



Trouble Line

AC Magnesium Patch (Mini/ Small/ Medium/ Large Series)

- 99% High-purity magnesium's anti-inflammation effects
- Essential minerals strengthen skin barrier
- Suitable for acne-prone skin
- Skin hypoallergenic test completed
- Allergy test completed (Allergy Free)
- Multiple patents reserved (Korea/Global)

Trouble Line: Olive Young(H&B Store) Only

01 Mini (15 Patches)



For whiteheads
and tiny troubles



Patch size 9mm

02 Small (10 Patches)



For small troubles



Patch size 12mm

03 Medium (12 Patches)



For major and
purulent troubles



Patch size 18mm

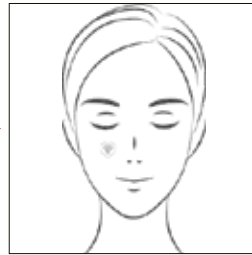
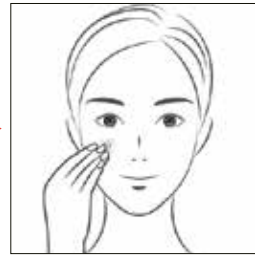
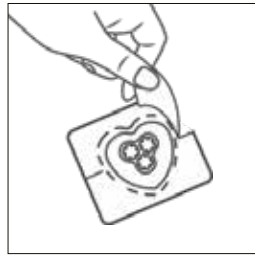
04 Large (6 Patches)



For wide range
of troubles



Patch size 23mm



• This product contains:

Magnesium patch+ Hydrocolloid adhesive

• Highlighted Ingredients:

99%Magnesium - Visibly clears up blemishes
and prevents future breakouts.

• Suggested Usage:

After cleansing, apply a patch, needle side down, directly on your blemish. For best results, wear for at least six hours.
Once applied, leave it to work overnight and take off the next morning.

• Clinical Results:

Significantly improved tiny or cystic troubles in 8 hours

Trouble Line: Patch Only

One Night Trouble Patch

15 Patches



- **This product contains:**

Magnesium patch+ Hydrocolloid adhesive

- **Highlighted Ingredients:**

99%Magnesium - Visibly clears up blemishes and prevents future breakouts.

One Night Red Patch

12 Patches



- **Suggested Usage:**

After cleansing, apply a patch, needle side down, directly on your blemish. For best results, wear for at least six hours. Once applied, leave it to work overnight and take off the next morning.

- **Clinical Results:**

Significantly improved tiny or cystic troubles in 8 hours

Super Patch

8 Patches



Trouble Line: Patch Only



This product contains:

Magnesium print+ Hydrocolloid adhesive

Each packet includes 72 hydrocolloid patches in 2 sizes and 7 designs.

Highlighted Ingredients: 5 Features

- **Best quality**

Medical-grade hydrocolloid gently absorbs pimple gunk, drug-free, non-drying, non-irritating

- **Advanced hydrocolloid with natural ingredients for trouble care**

Tea Tree, CICA, Calendula

- **99% Pure magnesium print**

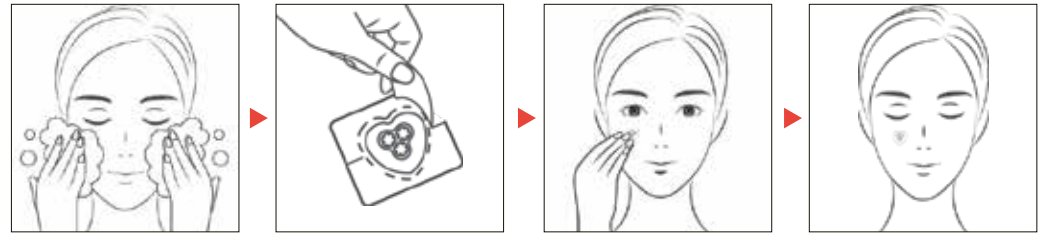
Help to reduce breakouts and strengthen skin barrier

- **Lovely design and variety sizes**

Choose best size for your affected area and shiny moon & star patches can help you avoid the embarrassment of acne.

- **Easy to use**

Clean & dry affected area, and then peel and apply the hydrocolloid point patch overnight or desired amount of time.



- After cleansing, apply a patch, adhesive side down, directly on your blemish. Replace as needed.

Trouble Line: Patch with Facial Mask



FACIAL SPOT CARE FOR SKIN TROUBLE SOLUTION

12 Magnesium Patches

(open round type: surrounded on patch sides by a rim of skin-contact adhesive)
+ 2 Trouble Ampoule-Infused Sheet Masks

• Suggested Usage:

After cleansing, apply a patch first, needle side down, directly on your blemish.
And place the sheet mask then gently spread over face. Leave on for 15 to 20 minutes, as desired.
Gently remove mask and discard it after a single use.
For best results, leave patch to work overnight and take off the next morning.



FACIAL MULTI CARE FOR SKIN TROUBLE SOLUTION

4 Magnesium Patches

(open oval type: surrounded on patch sides by a rim of skin-contact adhesive)
+ 2 Trouble Ampoule-Infused Sheet Masks

• Highlighted Ingredients:

99% Magnesium - Visibly clears up blemishes and prevents future breakouts.
Mask - Trouble sheet mask infused with trouble ampoule containing Centella Asiatica, Panthenol, and Madecassoside.

• Clinical Results:

Significantly improved tiny or cystic troubles in 8 hours



LED CARE PATCH

LED CARE PATCH

LED Device for the face that targets wrinkles and blemishes for visibly smoother, clearer skin.



Blue Light
Killing acne bacteria



Red Light
Activating skin cells



5 Features

- **Red Light Therapy**
Stimulate skin cells to boost collagen to firm and smooth texture
- **Blue Light Therapy**
Reduce the appearance of troubles and calms and tightens skin
- **UV Free**
No harmful UV rays, eyes & skin safe
- **Portable Device**
Battery-powered beauty device is designed to be easily carried or moved
- **Chemical Free Treatment**
Use it without any skin care products



Before use



After use

LED CARE PATCH



LED CARE PATCH

1 Led Device + 6 magnesium patches
+ 3 Cleansing pads+ 1 trouble ampoule.

About the Product:

- **LED Device** – Red LED lights to support the production of collagen and visibly reduce wrinkles, and blue LED lights to target acne-causing bacteria.
- **99% Magnesium Patch** – Visibly clears up blemishes and prevents future breakouts.
- **Trouble Ampoule** - Ampoule containing Centella Asiatica, Panthenol, and Madecassoside.
- **Cleansing Pad** – 100% cotton pad containing Pennywort, Green tea extracts, and Aloe vera extract.

• Suggested Usage:

After cleansing with a pad, apply a patch, needle side down, directly on your blemish.
And peel off the protective film on the patch and attach the LED device on the adhesive.
1 click: Trouble care mode, 6-minute treatment per area is enough to reduce pimples.
Double- Click: Wrinkle care mode, has a 14min time selection.
Great for skin tightening and boosting collagen.

• Clinical Results:

Significantly improved pimples and fine lines in 1week.

Wrinkle & Brightening Line

Magnesium micro-needles improve skin thickness and dermal density.

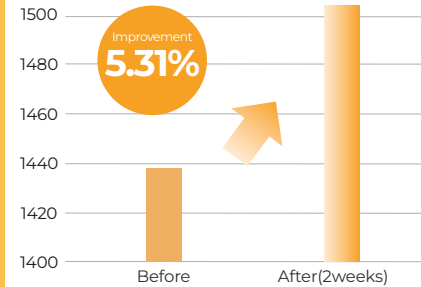
- Collagen rejuvematation
- Increasing the absorpotion of brightening ampoule
- Easy home remedy for wrinkles
- The proven anti-aging effect of hydregen therapy



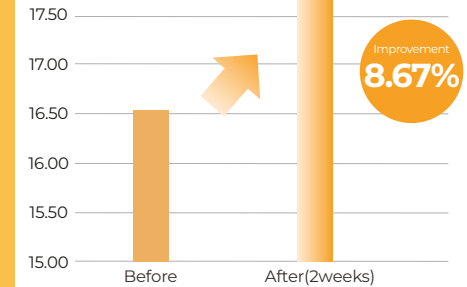
The clinical study on the anti-wrinkle patch



Skin thickness



Dermal density



[Report No. TEK-2020-000370]

Clinical testing conducted by P&K Skin Research Center on 22 volunteers. /Tested on facial area by applying the product. 2017. Feb. 17 -2017. Apr. 28. - Effect varies by individual.

Direct active ingredients delivery



Reducing fine lines and wrinkles



Wrinkle & Brightening Line: Patch with Facial Mask



FACIAL EYE ZONE CARE FOR WHITENING & WRINKLE

6 magnesium patches

(open Y type: surrounded on patch sides by a rim of skin-contact adhesive)

+ 2 anti-aging ampoule-infused sheet masks

• Suggested Usage:

After cleansing, apply a patch first, needle side down, directly on your problem area. And place the sheet mask then gently spread over face. Leave on for 15 to 20 minutes, as desired. Gently remove the mask and discard it after a single use. For best results, use 1-2 times per week.



FACIAL MULTI CARE FOR WHITENING & WRINKLE

4 magnesium patches

(open oval type: surrounded on patch sides by a rim of skin-contact adhesive)

+ 2 anti-aging ampoule-infused sheet masks

• Highlighted Ingredients:

99% Magnesium – Magnesium patch improves the skin barrier and delivers active ingredients in skin care products
Mask - Micro pumping sheet mask infused with anti-aging ampoule containing Niacinamide and Adenosine.

• Clinical Results:

Significantly improved fine lines and wrinkles in 2 weeks.

Wrinkle & Brightening Line: Patch with Ampole



FACIAL EYE ZONE CARE FOR WHITENING & WRINKLE

6 magnesium patches

(open Y type: surrounded on patch sides by a rim of skin-contact adhesive)

+ 2 anti-aging ampoule-infused sheet masks

• Suggested Usage:

After cleansing, drop a small amount of the syringe ampoule onto the needles and apply directly on your problem area. Leave on for 15 to 20 minutes, as desired. Gently remove the mask and discard it after a single use. For best results, use 1-2 times per week.



FACIAL MULTI CARE FOR WHITENING & WRINKLE

4 magnesium patches

(open oval type: surrounded on patch sides by a rim of skin-contact adhesive)

+ 2 anti-aging ampoule-infused sheet masks

• Highlighted Ingredients:

99% Magnesium – Magnesium patch improves the skin barrier and delivers active ingredients in skin care products.
Ampoule Syringe- Anti-aging ampoule containing niacinamide and coptis chinensis root extract and more.

• Clinical Results:

Significantly improved fine lines and wrinkles in 2 weeks.

Pore Care Sky Patch

Visibly shrinks enlarged pores for firmer-looking skin.

Magnesium pore home remedy with 2 steps pore masks.

Stimulate collagen rejuvenation with safe material, magnesium needles.

Pore Clinical Data from Samsung Medical Center

Outcome	Parameter	Estimate	S.E.	Pore size	
pore_nose	visit 4 vs 1(ref)	0.8421	0.4723	-0.2165	1.9007
	visit 5 vs 1(ref)	2.5948	0.7453	0.9243	4.2654
pore_cheek	visit 4 vs 1(ref)	-0.7895	1.0194	-3.0744	1.4955
	visit 5 vs 1(ref)	-0.8194	1.0851	-3.2515	1.6127

Clinical testing conducted by Samsung Medical Center on 18 volunteers.
Tested on facial area by applying the product.
2022. Sep. 19. - Effect varies by individual.



Pore Line



- New collagen
- Sebum removal
- Minimizing pores
- Soothing mask

Pore Line: Patch with Facial Mask



Pore Care Sky Patch

2 Nose Magnesium Patches + 2 Cheek Magnesium Patches

2 Pore Ampoule-Infused Strips

• Suggested Usage:

After cleansing, apply a patch first, needle side down, directly on your problem area. And place the step 1 mask then gently spread it over face. Leave on for 15 to 20 minutes, as desired. Gently remove the mask and apply the step 2 mask for aftercare, leave on for 15 to 20 minutes, as desired. Discard it after a single use. For best results, use 1-2 times per week.

• Highlighted Ingredients:

99% Magnesium – Magnesium patch improves the skin barrier and delivers active ingredients in skin care products.
Strip - Pore care strip infused with pore ampoule containing Tea tree leaf extract, Oenothera biennis extract, Amino acid complex, and more.

• Clinical Results:

Significantly tightened pores and skin in 2 weeks.



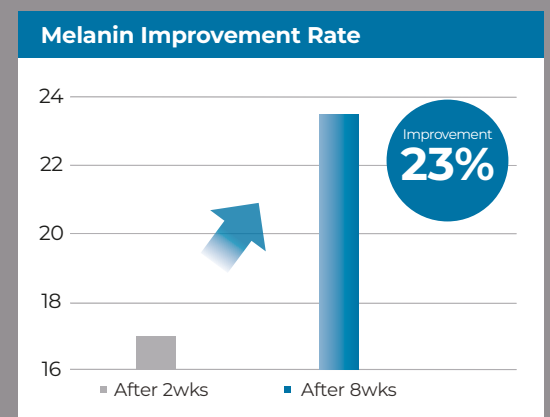
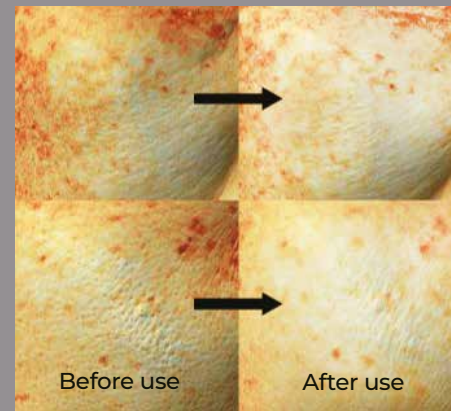
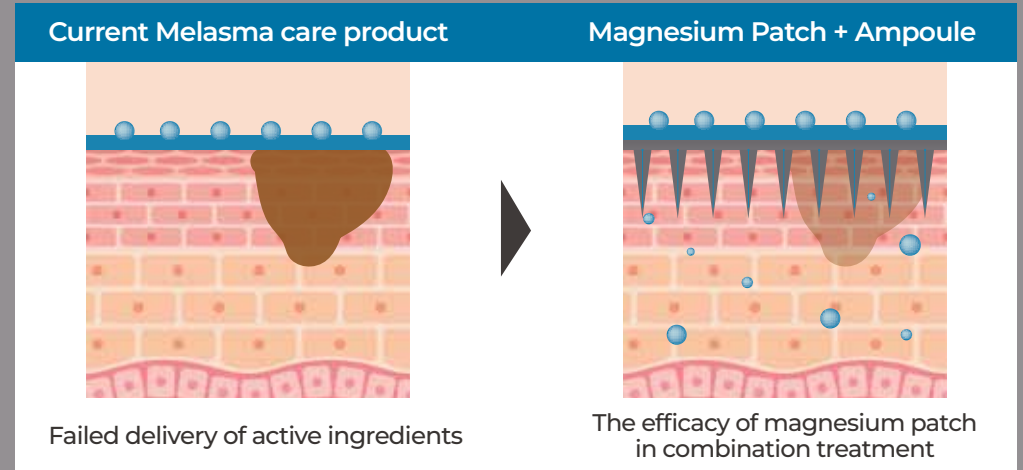
Light up your skin from the inside!

Boosting effect of higher absorption
"Tranexamic Acid" x "Magnesium patch"

MELASMA Line

Mela Snow For Your Flawless Skin!

Magnesium needle patch delivers Tranexamic acid ampoule directly into the skin.
Total 20,000ppm of Tranexamic acid are included in ampoule & eye mask.



[Report No. TEK-2020-000370]

Clinical testing conducted by KTR on 22 volunteers. / Tested on facial area by applying the product twice a week.
2020. Sep. 09 – 2020. Nov. 03 - Effect varies by individual.

Melasma Line: Patch with Facial Mask



Mela Snow

4 magnesium patches + 1 syringe brightening ampoule
+ 2 brightening ampoule-infused eye masks

• Suggested Usage:

After cleansing, drop a small amount of the syringe ampoule onto the needles and apply on your problem area.

Leave on for 15 to 20 minutes, as desired. Gently remove the mask and discard it after a single use.

For best results, use 1-2 times per week.

• Highlighted Ingredients:

99% Magnesium – Magnesium patch improves the skin barrier and delivers active ingredients in skin care products.

Syringe Ampoule - Brightening ampoule containing Tranexamic acid, Niacinamide, and more.

• Clinical Results:

Significantly improved dark spots and uneven skin tone in 4 weeks.

LAB n PEOPLE



www.labnp.com

www.snow2plus.com

Headquarter / Manufactory

46-121 Okjeong-ro (Okjeong-dong),
Yangju-si, Gyeonggi-do

✓ ISO 22716
✓ ISO 13485

R&D / Sales Office

#806 House D Sejong Tower, 26,
Seongsuil-ro 10-gil, Seongdong-gu, Seoul

TEL No. + 82-31-846-0204

FAX No. + 82-31-847-0204

E-MAIL kskim@labnp.com

kelly@labnp.com

olivia@labnp.com